



Finding School Information

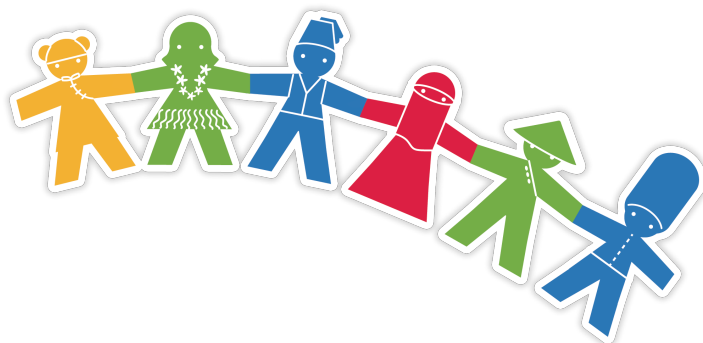
Parents can obtain information of various types of schools from the following channels:

“School Profile”, from the website of the Committee on Home-School Cooperation, at <http://www.chsc.hk/eng/>

- “Profile of Kindergartens and Kindergarten-cum-Child Care Centres ” - listing various basic information of registered kindergartens / kindergarten-cum-child care centres, including name of the school, school registration number, address, telephone number, qualifications of teachers and approved school fees, etc.
- “Primary School Profile” - providing basic information on most primary schools in Hong Kong (except international schools and special schools), including features of schools, their facilities, class structures, extra-curricular activities, Primary One Admission (POA) System and an overview of the POA school nets.
- “Secondary School Profile” - providing basic information on most secondary schools in Hong Kong (except international schools and special schools), including the features of schools, their facilities, class structures, extra-curricular activities, tuition fees and other fees, etc.

Webpage on “Education services for non-Chinese speaking (NCS) students”, at <http://www.edb.gov.hk/ncs>, with the following information available for parents’ reference:

- Information leaflets, e.g. “Brief on Education Support Measures for Non-Chinese Speaking (NCS) Students”, and information leaflets which are written in some ethnic minority languages.
- School lists [--> Useful school lists], e.g. “International Education in Hong Kong - A Prospectus”, List of schools provided with school-based support programmes specifically arranged for non-Chinese speaking students, List of kindergartens / kindergarten-cum-child care centres adopting a non-local curriculum, School Lists (By District), List of “Through-train” Schools, and List of Direct Subsidy Scheme Schools, List of Schools Offering Full-time Initiation Programme for Newly Arrived Children including non-Chinese speaking students, and List of Centres Operating “Induction Programme” for Newly Arrived Children including non-Chinese speaking students, etc.





Finding School Information

Other channels:

EDB's Regional Education Offices: Copies of the District school lists, "Profile of Kindergartens and Kindergarten-cum-Child Care Centres", "Primary School Profile", and "Secondary School Profile" are displayed there for reference. The enquiry numbers and addresses of these offices are listed at page 14.

Major public libraries: Copies of "Primary School Profile" and "Secondary School Profile" are displayed there for reference.

Enquiry: 2921 0208

Website: www.hkpl.gov.hk/en/locations/opening-hours.html

Home Affairs Department's Public Enquiry Service Centres: Copies of "Primary School Profile" and "Secondary School Profile" are displayed there for reference.

Enquiry: 2835 2500

Website: http://www.had.gov.hk/en/public_services/public_enquiry_services/ctec.htm



All the Maternal and Child Health Centres of the Department of Health and the Integrated Family Service Centres of the Social Welfare Department: Copies of "Profile of Kindergartens and Kindergarten-cum-Child Care Centres" are displayed there for reference.

Maternal and Child Health Centres, Department of Health:

Enquiry: 2112 9900

Website: http://www.fhs.gov.hk/english/centre_det/maternal/maternal.html



Integrated Family Service Centres, Social Welfare Department:

Enquiry: 2343 2255

Website: www.swd.gov.hk/en/index/site_pubsvc/page_family/sub_listofserv/id_ifs/



Individual schools' websites⁵

⁵ Parents can find the websites of individual schools from the District School Lists (<http://www.edb.gov.hk/en/student-parents/sch-info/sch-search/index.html>) and the website of the Committee on Home-School Co-operation (<http://www.chsc.hk/>).