

## “In Love We Share, In Love We Grow” Animation Series

### – Friendship is a Sheltering Tree –

#### (Pre-viewing)

1. In the saying “Friendship is a sheltering tree”, how is friendship compared to a sheltering tree?

Friendship is like a tree, providing a sense of protection and support, giving care and strength to those it includes, just like a tree’s physical structure and functions.

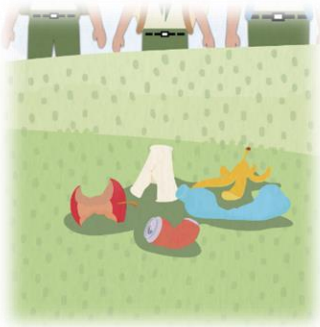


2. What is the figurative language used in the phrase “Friendship is a sheltering tree”?

A metaphor.

#### (While-viewing)

During their hike in the country park, Emma, Joe, and Lucas observed irresponsible behaviours among other hikers. Watch the video and answer the following questions:



3. Emma saw litter left by other hikers and decided to clean it up. Will you help her?

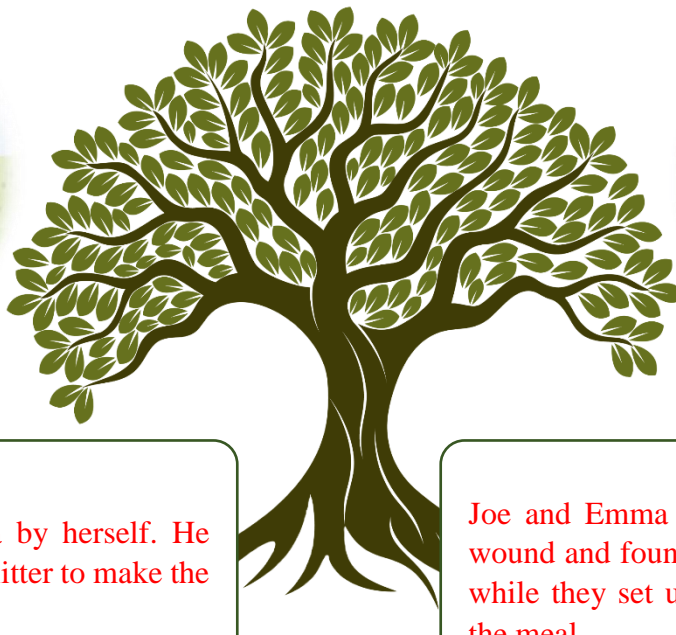
*(Video Time: 01:23 – 01:46)*



4. Two mischievous children were throwing stones at the birds and carving on the tree trunks. Will you stop them?

*(Video Time: 02:40 – 02:57)*




5. Write down two examples of “friendship as a sheltering tree” from the video.



Joe didn't leave Emma by herself. He helped her clean up the litter to make the area cleaner.

Joe and Emma helped Lucas clean his wound and found a place for him to rest while they set up the tent and prepared the meal.

6. How did Emma, Joe, and Lucas respond differently when they saw litter everywhere in the country park? Quote their responses. Also, why do you think they reacted differently? How did their reactions reflect their personalities and the different values they held? *(Video Time: 01:23 – 02:38)*

	Emma	Joe	Lucas
			
Responses	Emma took the initiative to clean up the litter and asked Joe and Lucas to join her.	Joe happily joined in to help Emma tidy up the area.	Lucas continued travelling without offering any help.
Lines	“Let’s do something about it. We can help clean up the area.”	“Sure! I’m happy to help out.”	“Hey, the litter is not ours. I couldn’t care less!”
Personalities & Values	Emma showed responsibility as she took charge to address the litter issue. She also cared about the environment and worked with others to clean up the litter.	Joe was helpful and thoughtful. He valued teamwork and consideration for others.	Lucas was self-centered and indifferent. He lacked empathy and social responsibility by ignoring the litter problem.

**(Post-viewing)**

7. Write a blog post as if you were Lucas to describe how your experience today has inspired you.

A pink sticky note is attached to the top left corner of a grey sheet of paper with punch holes on the left side. A black rectangular redaction mark is at the top center. In the middle of the page is a framed illustration of a campsite in autumn. Two blue tents are pitched on a yellow ground. The background features yellow and orange trees, green evergreens, and falling leaves. Below the illustration are ten horizontal lines for writing.