

# 暴雨警告信號生效時 你應該怎麼辦？

## 暴雨警告信號生效時 你應該怎麼辦？

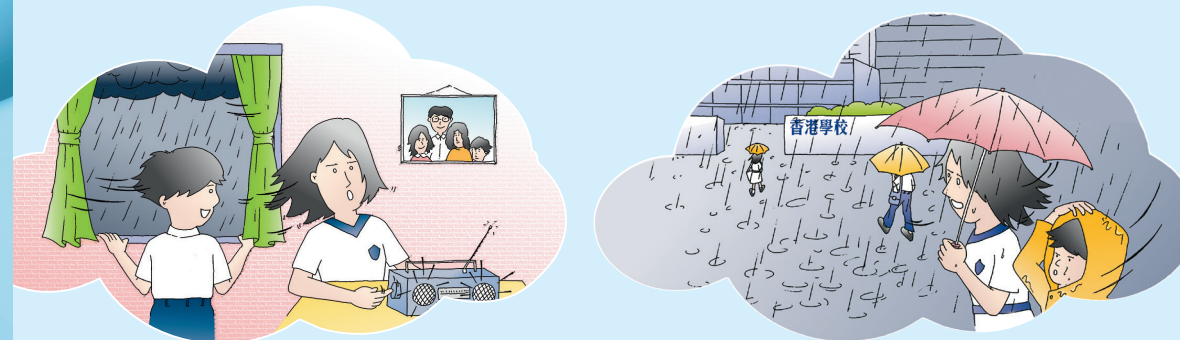
### 黃色暴雨警告信號生效時應注意

除非教育局另行通知，否則所有學校均應照常上課。  
請留意電台或電視台有關最新天氣、道路和交通情況的廣播。

### 紅色或 黑色暴雨警告信號生效時應注意

如信號在以下時段內發出，即表示學生**無需上課**

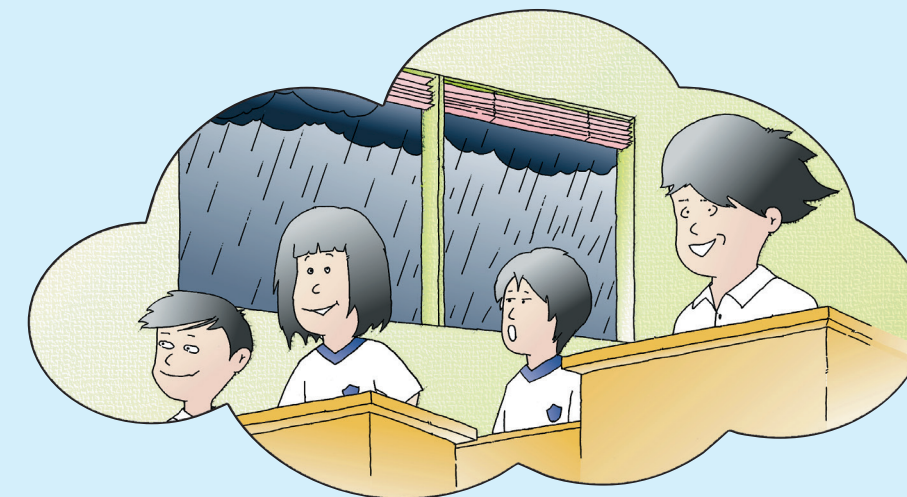
上午5時30分至8時前	上午校及全日制學校
上午10時30分至下午1時前	下午校



- 未離家上學的學生應留在家中。
- 學校必須保持校舍開放直至正常放學時間為止，並實施應變措施，包括安排人手照顧已返抵學校的學生。
- 家長無需急於前往學校接回子女。
- 如學生在上學途中獲悉停課，宜因應雨勢、道路、斜坡或交通情況，以決定是否繼續前往學校。
- 已返抵學校的學生應留在校內，直至情況安全才回家。

如信號在以下時段內發出，即表示學生須**繼續上課**

上午8時或以後	上午校及全日制學校
下午1時或以後	下午校



- 學生應在學校繼續上課，直至正常放學時間為止，並須在安全情況下，才可離校回家。
- 家長無需急於前往學校接回子女。

#### 注意事項：

- 家長及學生在暴雨期間應留意電台、電視台有關學校及公開考試的公布。
- 如天氣、道路或交通情況惡劣，家長可自行決定應否讓子女上學。
- 對於因惡劣天氣影響而遲到或由家長決定於當日缺課的學生，學校會酌情處理，有關學生不會因而受到處分。
- 校車司機應留意電台公布有關暴雨的最新消息，除非前面路面或交通情況不許可，否則應確保接載學生到安全地方(通常為就讀的學校)。



# What do rainstorm warning signals mean to you?

## What do rainstorm warning signals mean to you?

When an  **AMBER** rainstorm warning signal is in force

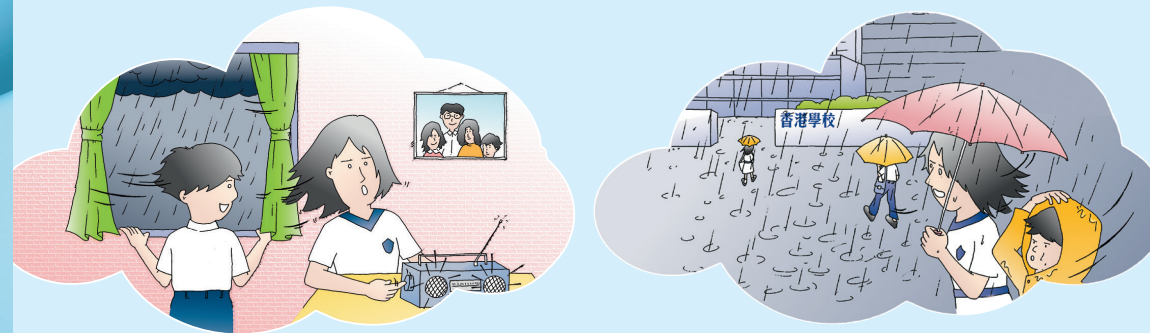
All schools operate as usual unless advised otherwise by the Education Bureau.

Please pay attention to radio or TV announcements about updates on weather, road and traffic conditions.

When a  **RED** or  **BLACK** rainstorm warning signal is in force

If a signal is issued during the following periods, it means that students **need not attend school**.

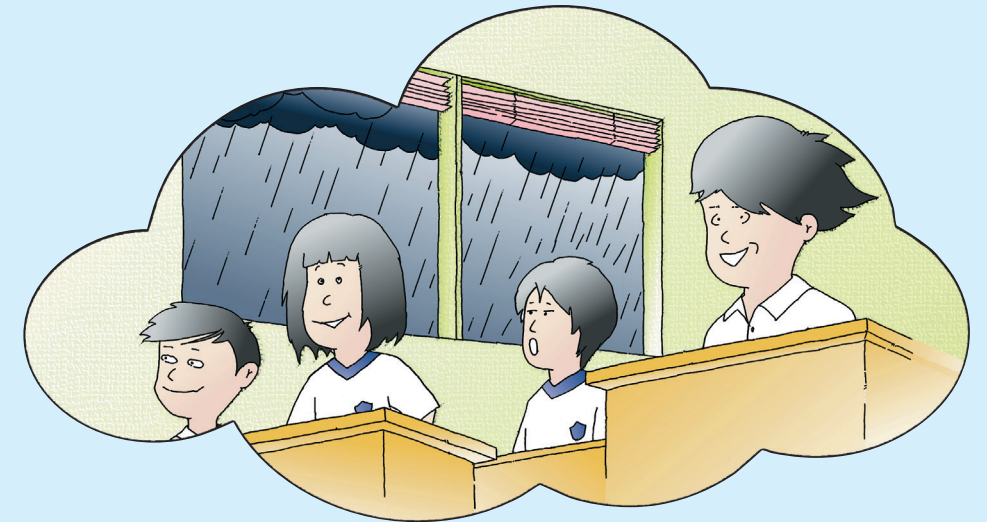
At or after 5:30 am and before 8:00 am	AM and Whole-day Schools
At or after 10:30 am and before 1:00 pm	PM Schools



- Students who have not left for school should stay at home.
- Schools should keep their premises open until the end of normal school hours and implement contingency measures, including arranging staff to look after those students who have arrived at school.
- Parents need not pick up their children immediately.
- If students are aware of class suspension announcement on the way to school, they should decide whether to continue their journey to the school in light of rainfall and road, slope or traffic conditions.
- Students who have arrived at school should stay there until it is safe to return home.

If a signal is issued during the following periods, it means that students should **continue with their lessons**.

At or after 8:00 am	AM and Whole-day Schools
At or after 1:00 pm	PM Schools



- Students should continue with their lessons until the end of normal school hours and return home when the conditions are safe.
- Parents need not pick up their children immediately.

### Points to note:

- Parents and students should pay attention to radio or TV announcements about school and public examinations in the event of rainstorms.
- In the event of unfavourable weather, road or traffic conditions, parents could exercise their discretion when deciding whether to send their children to school.
- Schools will make allowance for students who are late owing to inclement weather or absent on their parents' advice.
- School bus drivers should pay attention to radio announcements about rainstorm updates, and ensure that students are taken to a safe place, usually the school they attend, unless road or traffic conditions are unfavourable.