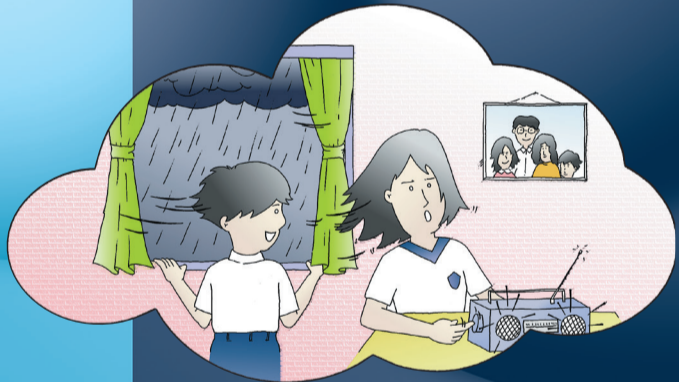


紅色或黑色

暴雨警告生效時 你應該怎麼辦？



如信號在上課前 發出，即表示：

學校將會停課，學生應留在家中。

如信號在學生上學 途中發出，即表示：

學校將會停課。學童宜因應雨勢、道路、斜坡或交通情況，以決定是否繼續前往學校。學校將保持校舍開放直至正常放學時間為止，並實施應變措施，包括安排人手照顧已返抵學校的學生。

已返抵學校的學生應留在校內，直至情況安全才回家。



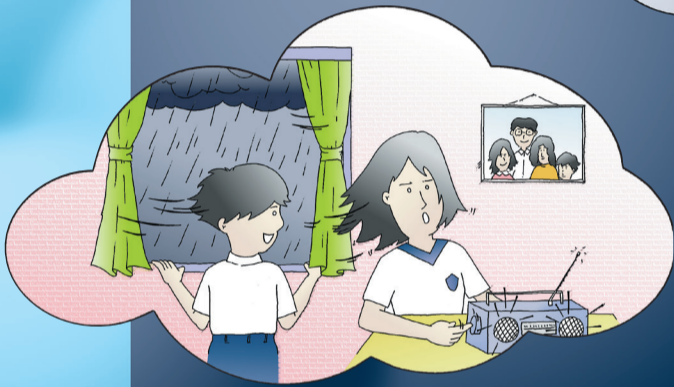
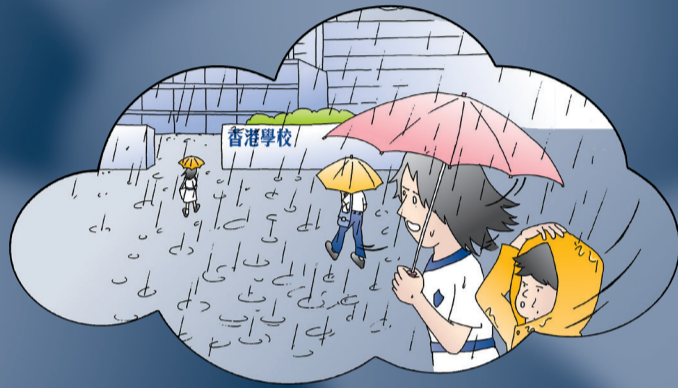
如信號在上課時間內 發出，即表示：

學生應繼續上課，直至正常放學時間為止，並須在安全情況下，才可離校回家。

家長無需急於前往學校接回子女。

留意電台、電視台或手機應用程式「香港政府通知你」的公布。

What does a **RED** or **BLACK** rainstorm warning signal mean to you?



Before school starts:

Classes will be suspended. Students should stay at home.

When some students have already set out for school:

Classes will be suspended. Students should decide whether to continue their journey to school in light of rainfall and road, slope or traffic conditions. Schools will keep their premises open until the end of normal school hours and implement contingency measures, including arranging staff to look after those students who have arrived at school.

Students who have arrived at school should stay there until it is safe to return home.



When school is in session:

Students should continue with their lessons until the end of normal school hours and return home when the conditions are safe.

Parents need not pick up their children immediately.

[Pay attention to announcements on radio, TV or via "GovHK Notifications" application.]